

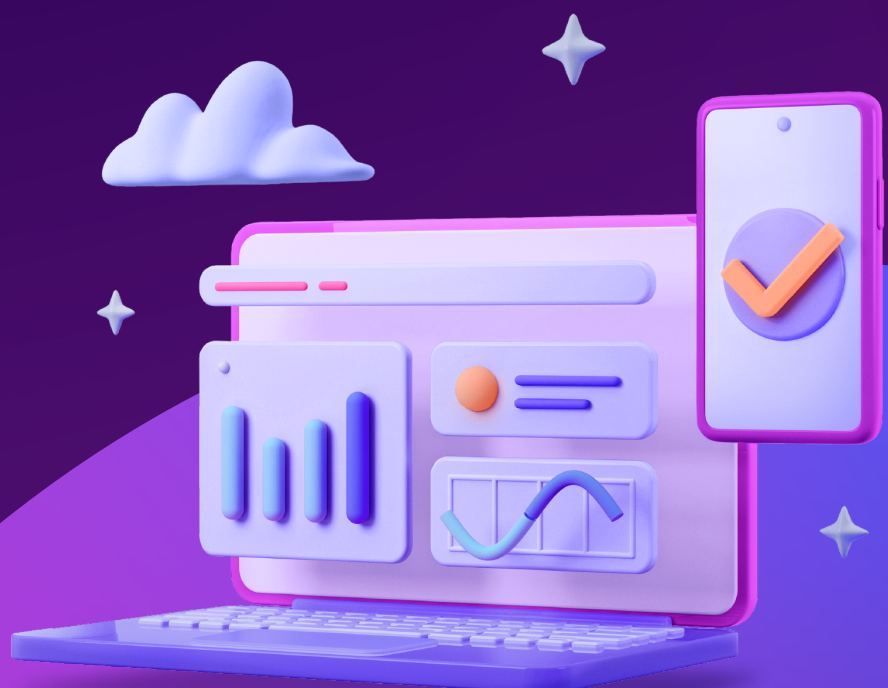


ACCELERATE YOUR GROWTH WITH THE MITTO PARTNER PROGRAM

Unlocking New Opportunities for Digital Marketing Agencies, Tech Partners, Freelancers, and System Integrators

—○—○—○—○—○—○—●—

In the ever-evolving digital landscape, growth and innovation are paramount. As digital marketing agencies, tech partners, freelancers, and system integrators, your clients rely on you to stay ahead of the curve and deliver exceptional results. At Mitto, we understand your challenges and are committed to fueling your success through our comprehensive partner program. Whether you're looking to enhance your service offerings, streamline operations, or drive customer engagement, partnering with Mitto will provide you with the tools and support needed to thrive.



EMPOWER YOUR CLIENTS WITH TOP-TIER COMMUNICATION SOLUTIONS



Cutting-Edge Technology

Equip your clients with Mitto's advanced messaging solutions, including SMS, WhatsApp, Viber, and more, to enhance their communication capabilities.



Global Reach

Ensure your clients' messages are delivered swiftly and reliably with Mitto's direct connections to over 100 countries, reaching customers worldwide.



Scalable Solutions

Offer flexible and scalable solutions that grow with your clients' businesses, meeting their evolving needs.



Dedicated Support

Provide 24/7 support from Mitto's globally dispersed team of multilingual communication experts, ensuring seamless integration and ongoing assistance.



Enhanced Security

Guarantee your clients' communications remain secure and trustworthy with Mitto's robust security measures, including end-to-end encryption and fraud prevention.



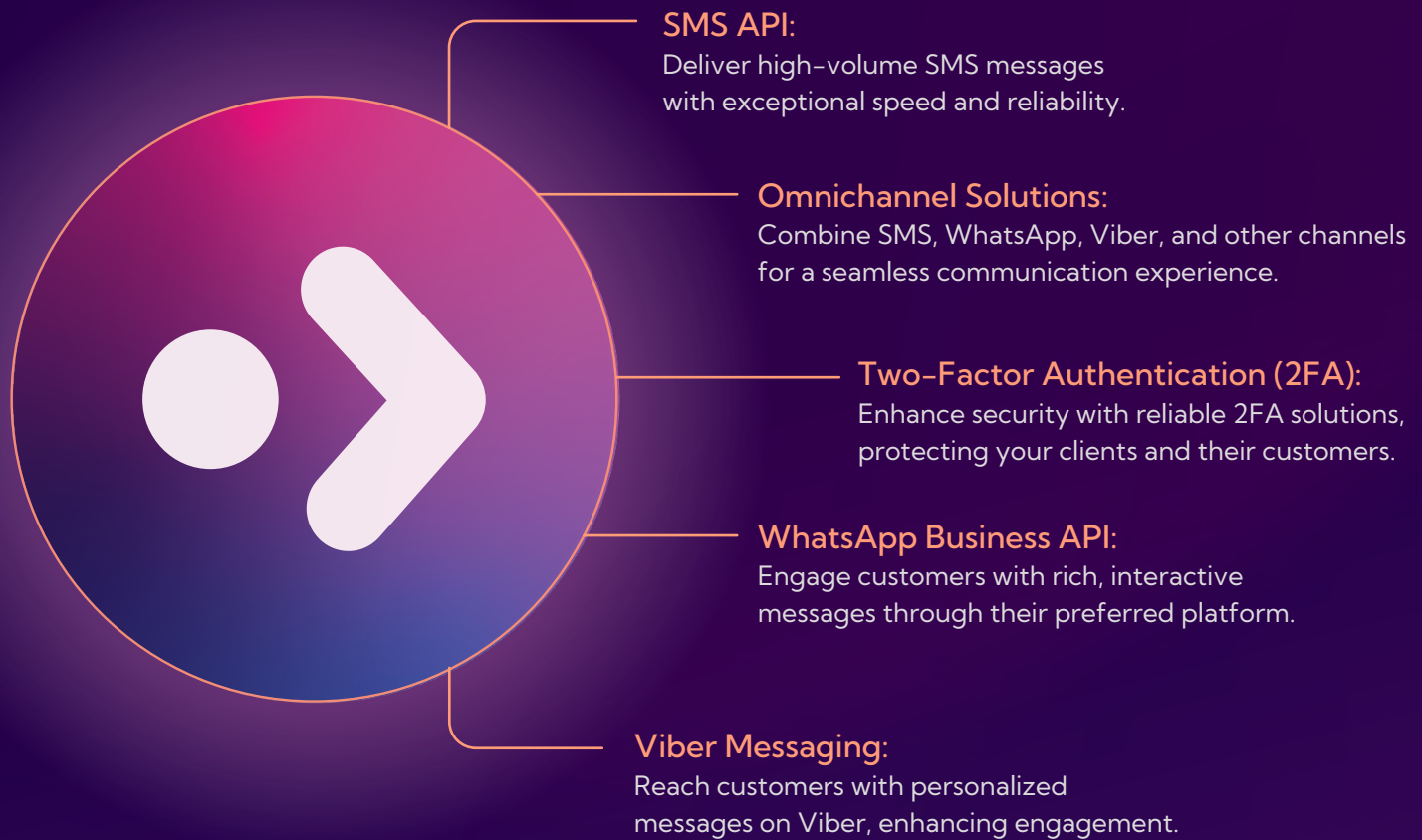
Competitive Advantage

Help your clients stay ahead of the competition by offering innovative and effective communication solutions that enhance customer engagement and drive business growth.

FUEL YOUR BUSINESS WITH EXCEPTIONAL BENEFITS

- ✓ **Revenue Growth:** Increase your revenue streams by offering Mitto's premium messaging solutions to your clients.
- ✓ **Marketing Support:** Leverage co-branded events, promotional materials, and joint marketing initiatives to boost your visibility and impact. Access exclusive resources, training, and workshops to enhance your sales efforts.
- ✓ **Brand Recognition:** Enhance your brand's reputation by partnering with a globally recognized leader in omnichannel communication.
- ✓ **Custom Solutions:** Tailor our solutions to meet the specific needs of your clients, ensuring maximum impact and satisfaction.
- ✓ **Customer Retention:** Strengthen customer loyalty by providing reliable, high-quality messaging services.
- ✓ **Seamless Integration:** Easily integrate Mitto's solutions into your existing platforms, streamlining operations and enhancing efficiency.

TRANSFORM YOUR OFFERINGS WITH MITTO'S SUITE OF PRODUCTS



mapp

REAL RESULTS WITH MITTO: A SUCCESS STORY

Mapp, a leading global marketing technology company, partnered with Mitto to enhance their messaging capabilities and drive customer engagement. By integrating Mitto's SMS API, Mapp was able to:



Achieve a 98% message open rate, significantly higher than traditional email campaigns.



Improve real-time communication with customers, resulting in higher satisfaction and loyalty.



Streamline their messaging operations, reducing costs and increasing efficiency.

NUMBERS THAT SPEAK FOR THEMSELVES



OUR PARTNER AND CLIENT PORTFOLIO

Explore the impact of our collaborations with leading names across various industries. Our partners and clients enjoy enhanced communication capabilities that foster growth and increase customer satisfaction.



mitto[>]



CPaaS 2023



CPaaS 2022



Mobile Messaging Report

JOIN THE MITTO PARTNER PROGRAM TODAY

Unlock new opportunities for growth and success by joining the Mitto Partner Program. Contact our team to learn more about how Mitto can help you deliver exceptional communication solutions to your clients. Together, we can drive innovation and achieve remarkable results.

Contact Mitto today to learn more

